



THE TREE

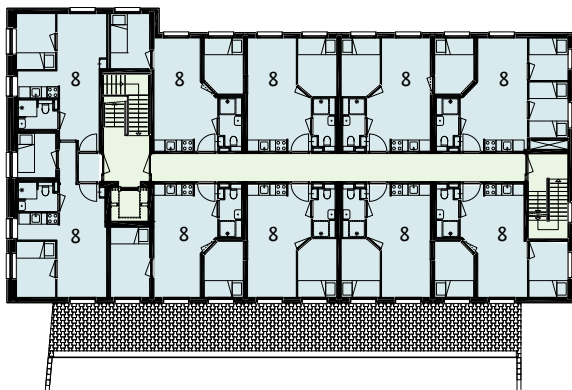


- 1 reception
- 2 collective lounge
- 3 offices
- 4 meeting room
- 5 veranda
- 6 kitchen
- 7 storage/technical /refuse
- 8 housing units

## The Tree

Abbinck X De Haas architectures were selected to design Hoofddorp's new shelter for single-parent families. Homeless families can be housed for a period of up to 9 months in a caring and protected environment. The Tree is a compact and efficient building comprising flexible living quarters and 400m<sup>2</sup> of supportive functions. The building will naturally be sustainable with regards to energy consumption, functional use and materials. Special attention is given to the aspects of privacy, safety, self-sufficiency and social interaction.

The Tree is focused on the 150 year old beech tree which stands on the site as a witness of history and as a protector for the future. The tree is reflected in the architecture and materials of the building and its interior. It symbolises grounding, change and personal growth. The branches represented in the slate cladding literally embrace the inhabitants and stretch out into space at the same time, thus symbolising the balance between this child-friendly sheltered environment and the need to eventually go out there and face the world.



### Client:

Housing corporation Ymere

### Location:

Hoofddorp

### Programme:

Homeless shelter for (single parent) families  
30 housing units, multifunctional hall, offices,  
Surface area:

1700 m<sup>2</sup>

### Status:

design 2010/2011

completion 2012

[www.abbinckdehaas.nl](http://www.abbinckdehaas.nl)

[info@abbinckdehaas.nl](mailto:info@abbinckdehaas.nl)

X