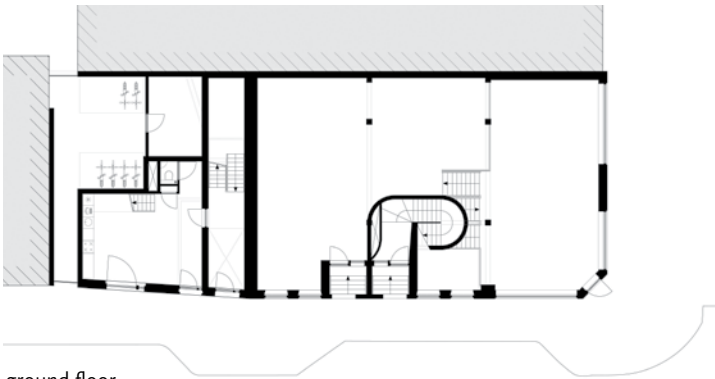


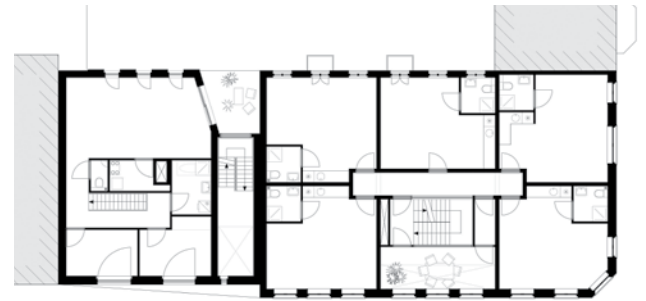


ABBINK × DE HAAS  
architectures

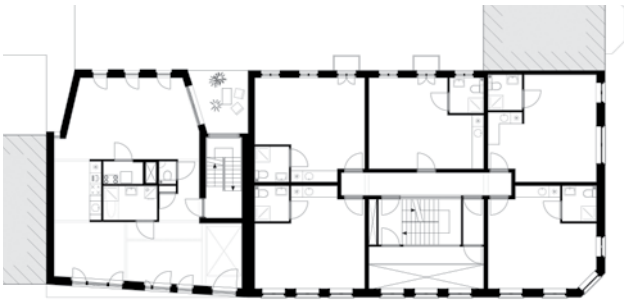
# THE SWEET HERRING



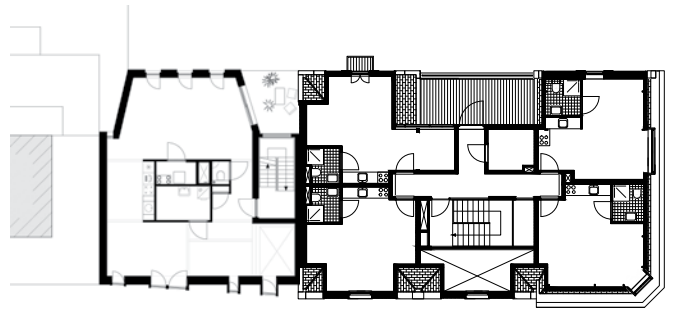
ground floor



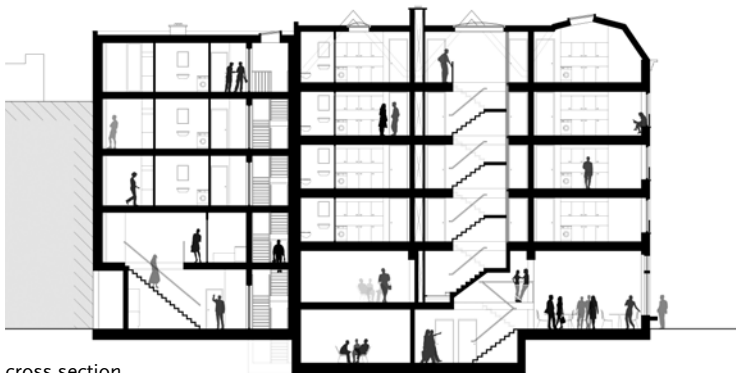
first floor



second and third floor



fourth floor



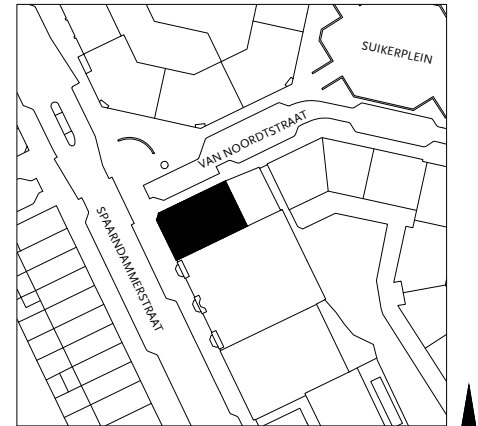
cross section





De Zoete Haring (The Sweet Herring)

The project 'Sweet Herring' consists of a part new urban infill and a thorough renovation of three 1901 homes. The project combines independent student units, apartments and a bar/restaurant. The renovation part was completed in 2011. The artist Marjet Wessels Boer designed the artwork Double Glazing as a reflection of the world outside. It is a subtle piece of work in which the digital prints on the renovated windows literally reflect the opposite side of the street and momentarily confuses the viewer in what they are seeing. The restaurant and central stairwell behind the artwork light up at night which is why this piece is placed in the central section of this 19th century ensemble of Amsterdam facades.



Client:

De Principaal De Key

Location:

Van Noordtstraat, Amsterdam

Programme:

19 student units, 4 apartments and catering facilities

Area:

2010 m2

Status:

renovation completed July 2011

Artwork Double Glass:

Marjet Wessels Boer

Photography:

Hans Peter Follmi

[www.abbinkdehaas.nl](http://www.abbinkdehaas.nl)

[info@abbinkdehaas.nl](mailto:info@abbinkdehaas.nl)

X