



DER SCHNITT



“Human memory is a marvelous but fallacious instrument. The memories which lie within us are not carved in stone; not only do they tend to become erased as the years go by, but often they change, or even increase by incorporating extraneous features. “

Primo Levi



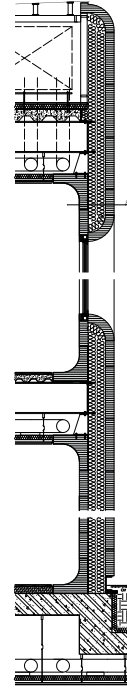
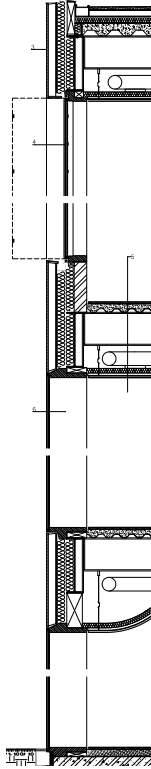
ESG glass balustrade 15 mm

STO verotec plate
with polyurethan coating

ESG folding glass window

isolated glazing
- VSG 2 x 4 mm
- SZR 14 mm
- ESG 6 mm

STREET FACADE

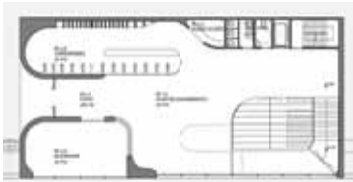


Litrocon
light transmitting concrete
wall system

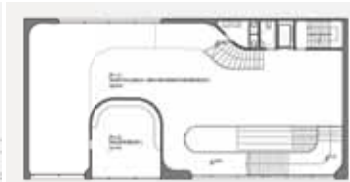


BACK & SIDE FACADES





Ground floor



First floor

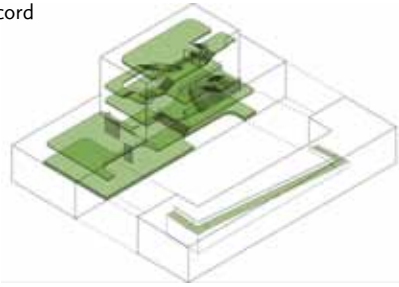


Second floor

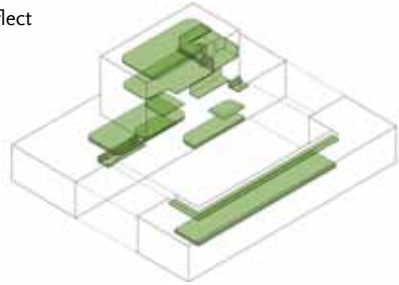


Third floor

record



reflect



a cut



Der Schnitt

A representation of time and history through architecture.

Designing a documentation centre about the National Socialist period on the site of the Braune Haus in Munich is an important, complex and delicate task. The job at hand can be reduced to two major issues: functionality and meaning. Functionality is self-evident and goes beyond efficiency, budget and effectivity. The design must be able to withstand the fluctuations of time and provide the institute with the space which will enable it to fulfil its role for society in an optimal fashion.

The issue of meaning however, is fundamental. In our view, the building cannot simply be seen as a neutral 'container'. The architectural and landscape design of such a program and on this specific location will inevitably become a statement about its significance in the context of the city. But how should one relate architecture to this subject without relapsing into platitudes?

The architecture of the building represents the interaction between space, the notions of time and collective memory, and the people occupying it. The design is a cross-section of the layered history of this location. Literally and figuratively, the building provides access to that history and at the same time emphasises the specific importance of the documentation centre as part of the public cityscape. Just like history and memories, the building is sometimes diffuse (using translucent concrete) and at other times layered or transparent. In this way, visitors become part of the building and the exhibition, and together they become part of the city.



Competition organiser:

München Baureferat

In cooperation with:

DS Landschaften

Location:

Munich, Germany

Programme:

Exhibition space

Education facilities

Offices, external space

Gross area:

3 200 m²

Status:

Competition 2008

www.abbinkdehaas.nl

info@abbinkdehaas.nl

X