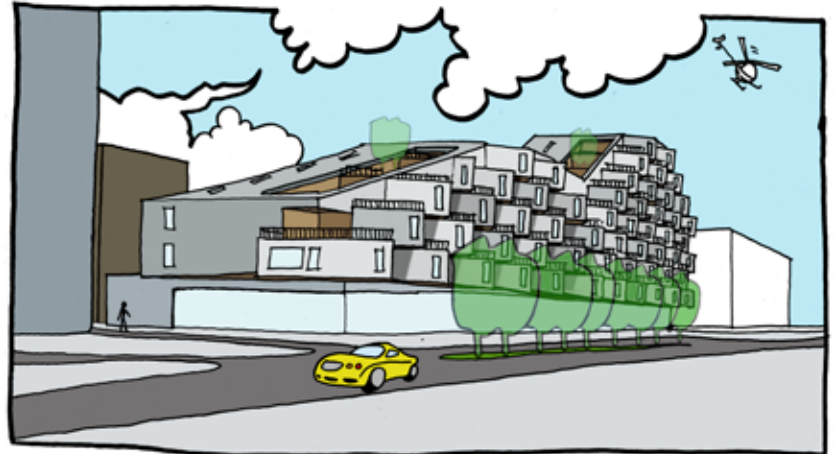
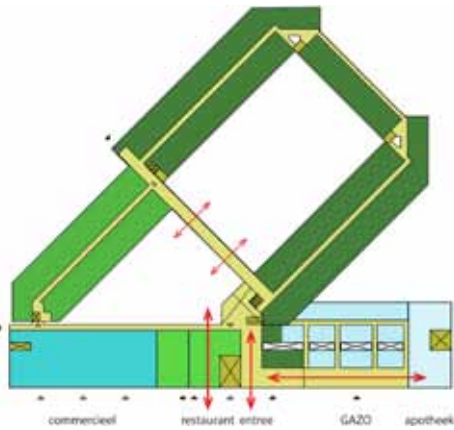
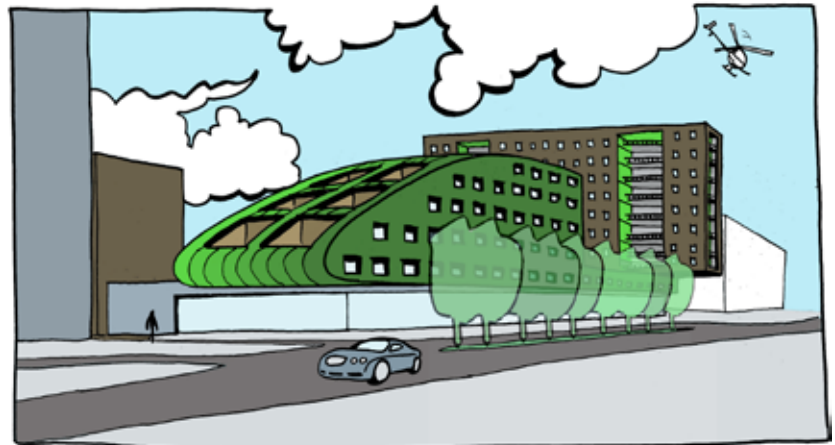
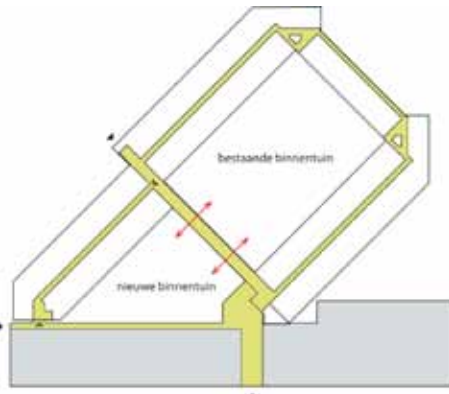
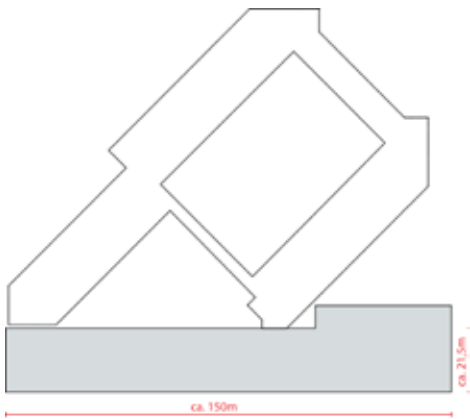
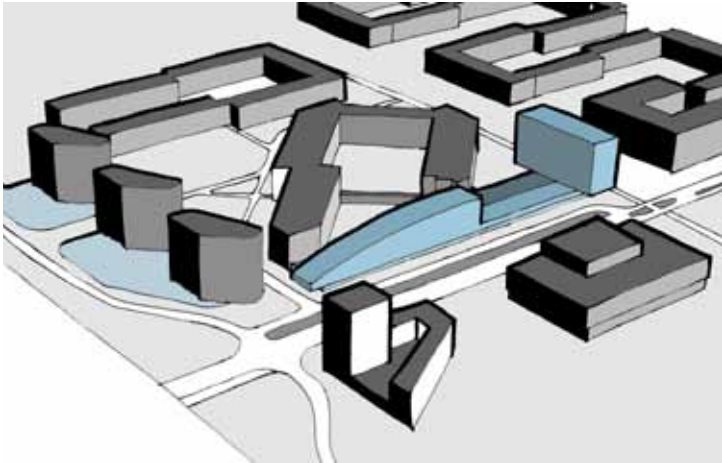
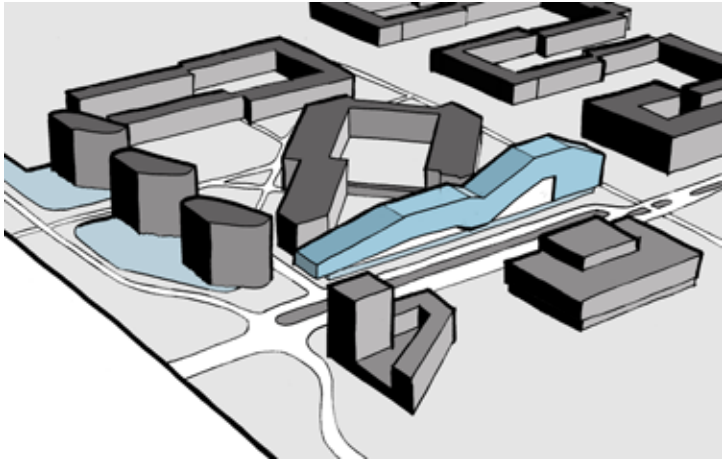


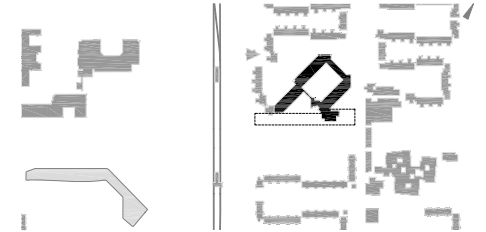
DE DRECHT





De Drecht

The Holendrechtreef (avenue) is being lowered and narrowed within the framework of the redevelopment activities centred on the Holendrecht railway station and its surroundings. This will create space for new buildings which, together with the shopping centre across from the avenue, will improve the quality of life in the area. In March 2008, we were asked to carry out a study into the urban development and design possibilities for expanding a residential centre for senior citizens: De Drecht. The study deals with the planning and design opportunities and bottlenecks in relation to the existing building, the adjacent buildings, the urban development points of departure and the proposed plan. The goal of the study, which at the same time presented a major challenge, was to provide a scenario in which an integrated development of the area would provide a solution to these issues and also create added value.



Client:

Delta Forte in the name of Stadsgenoot

Location:

Amsterdam Zuidoost

Programme:

care facilities, 90 apartments

Surface area:

21,000m²

status:

study 2008

X