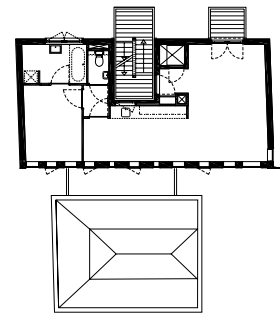
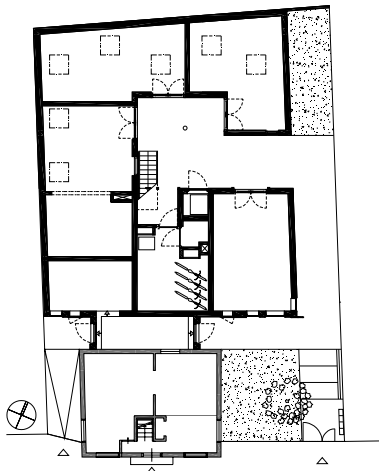




MISS BACKDROP



## Miss Backdrop

This quirky little site, a stone's throw from the Amstel river, sets the stage for a modest yet unique piece of theatrical architecture in the inner city of Amsterdam. The lead role in this urban play is reserved for the old Polder house, a tiny jewel amongst the city's treasures, a national monument and reminder of the original landscape beyond the city's borders. Miss Backdrop takes her place behind the Polder house in a double act supporting role; she forms a subtle backdrop to the Polder house's lead role but also plays a saucy supporting actress in this act about past & present. Miss B's zinc and glass costume is an essential part of her complex character; scale-defying, abstract with a classic touch, anonymous and slightly daring. The scenario for this play is inspired by history, local conditions and the special audience that Miss Backdrop caters to. As was the case in the olden days the collective courtyard on the ground floor is home to the hustle and bustle of small businesses and leads to the entrances of the homes above. This unique combination of affordable representative workspace and simple apartments is aimed at young, ambitious creatives with enough fantasy to create their own theatrics in these super-flexible units.



Client:  
Vandebouw  
Location:  
De Pijp, Amsterdam  
Programme:  
4 apartments and studios  
Plot size:  
225m<sup>2</sup>  
Gross area:  
680m<sup>2</sup>  
Status:  
Execution 2010  
In cooperation with:  
Elsbeth Falk

[www.abbinkdehaas.nl](http://www.abbinkdehaas.nl)  
[info@abbinkdehaas.nl](mailto:info@abbinkdehaas.nl)

X