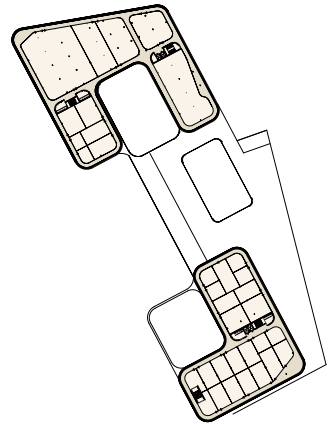
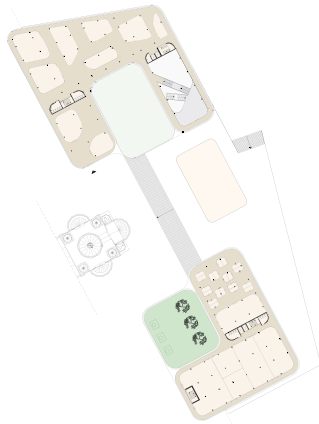
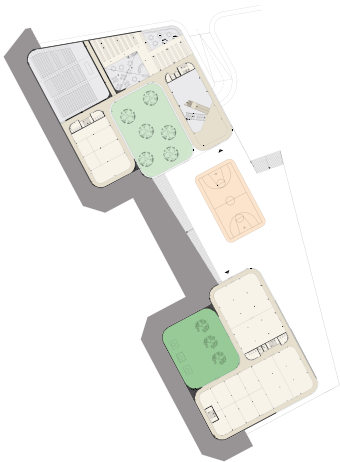
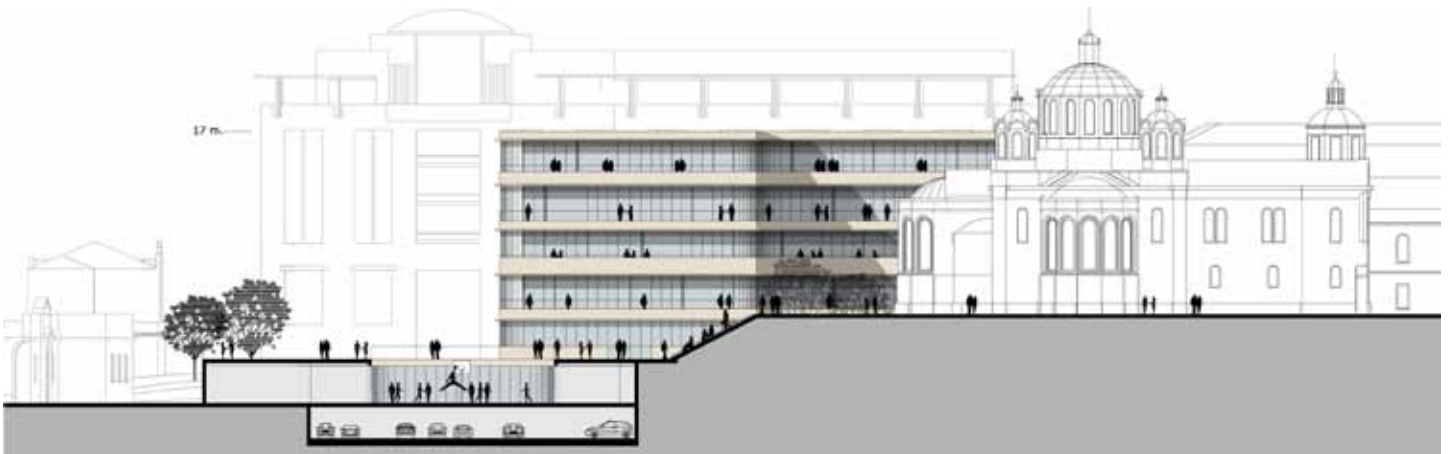


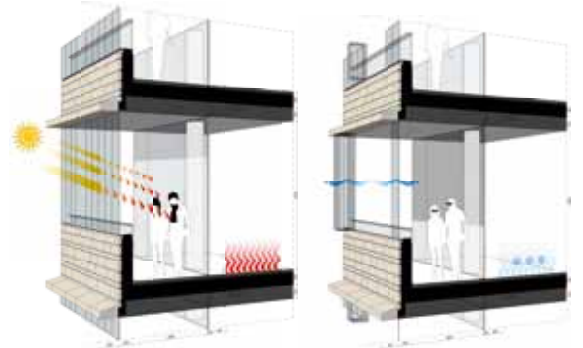


ABBINK × DE HAAS
architectures

BEZALEL MEETS THE CITY,
THE CITY MEETS BEZALEL







Bezalel meets the City, the City meets Bezalel



This large educational building is located at a prominent location in the city centre with fantastic view of the old city and the desert behind it. Fragmenting the volume and arranging it around cascading internal courtyards, the design adjusts itself into the urban fabric and the hilly topography and creates a new public pedestrian route through the institute.

The essential spatial conditions for art education include a combination of neutral, quiet and well lit learning spaces, and collective meeting spaces. We consider circulation space as probably the most important collective space. By placing the corridors along the facades and around the classrooms, a clear system of sunny corridors with beautiful views is established. In addition it reveals the dynamic activities and movements in the academy to the city - without harming the privacy of the classrooms. Above all, it is a climatic instrument, with open shady corridors in the summer and a passive heated buffer in the winter.

At Bezalel's new location the students and staff are, in effect, the outer skin of the academy – emphasising and establishing the traditional bonding between this institute and the city of Jerusalem.



Client:

Bezalel Arts Academy

Location:

Jerusalem, Israel

Programme:

School of art

Other facilities

Parking, exterior space

Gross area:

30 000 m2

Status:

International competition 2007

www.abbinkdehaas.nl

info@abbinkdehaas.nl

X