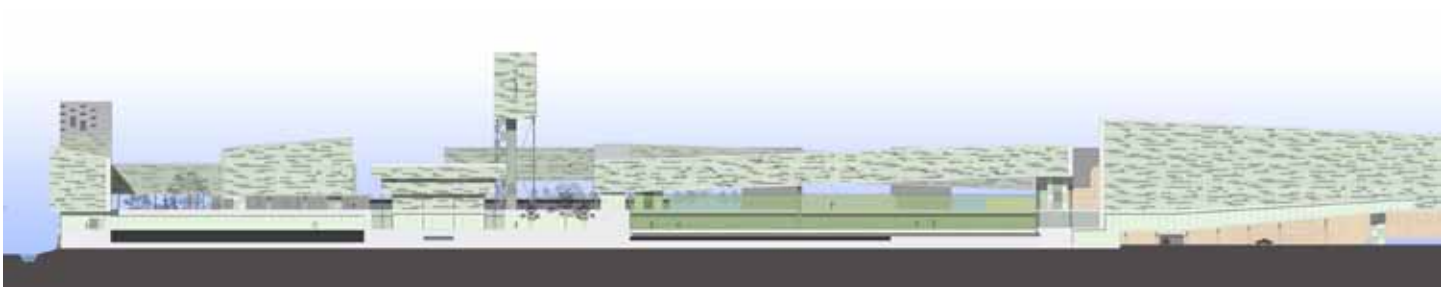
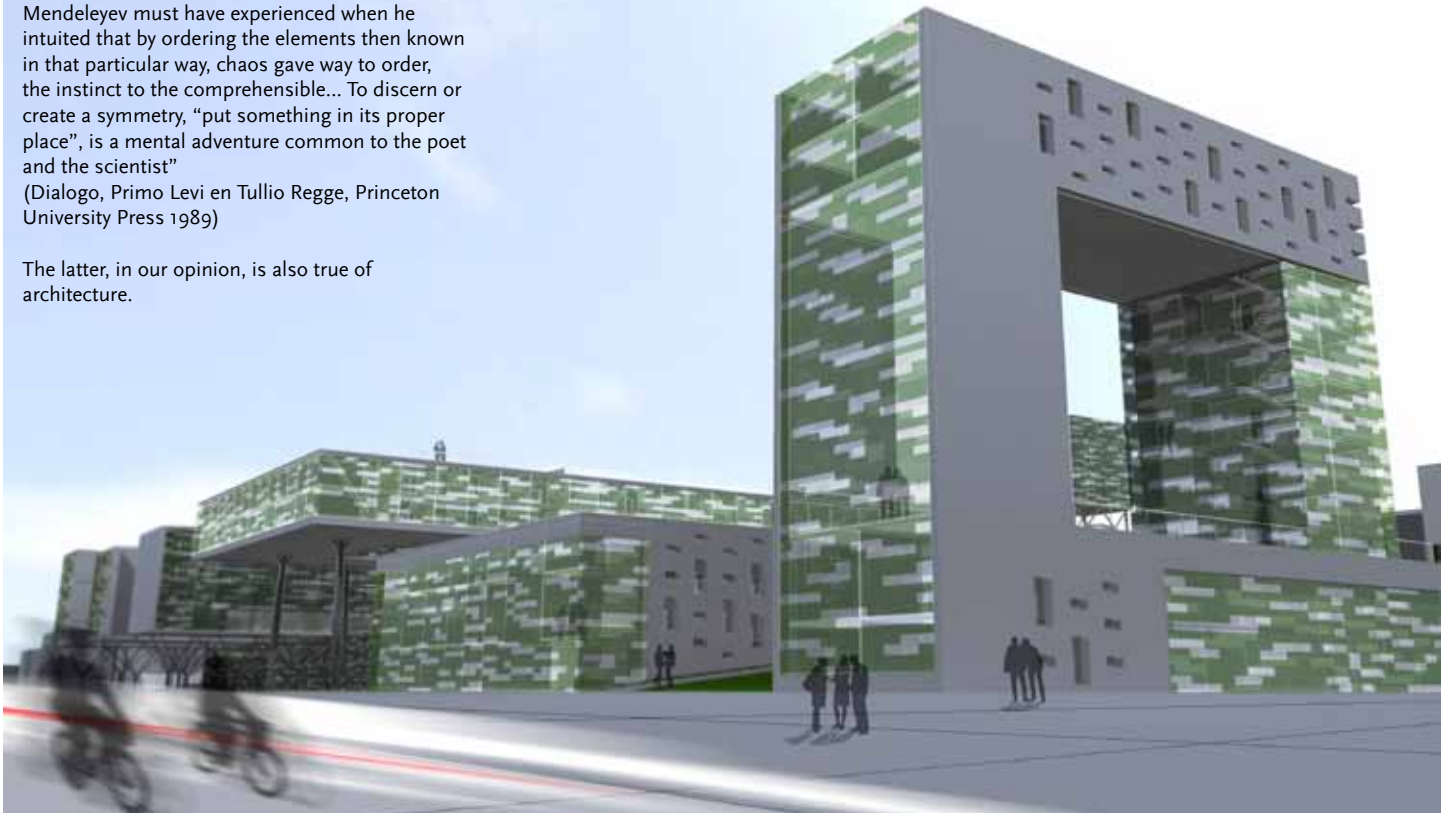


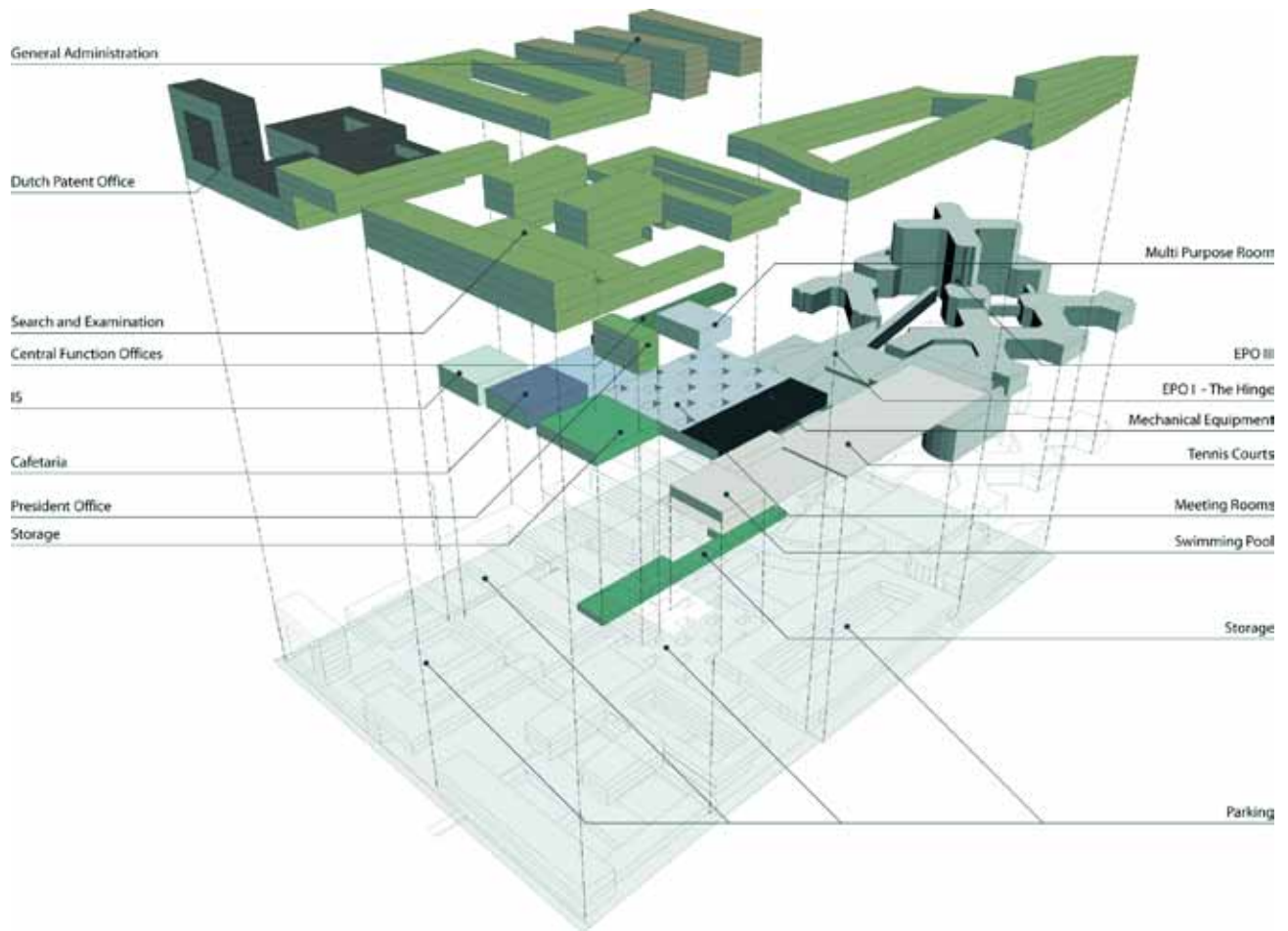


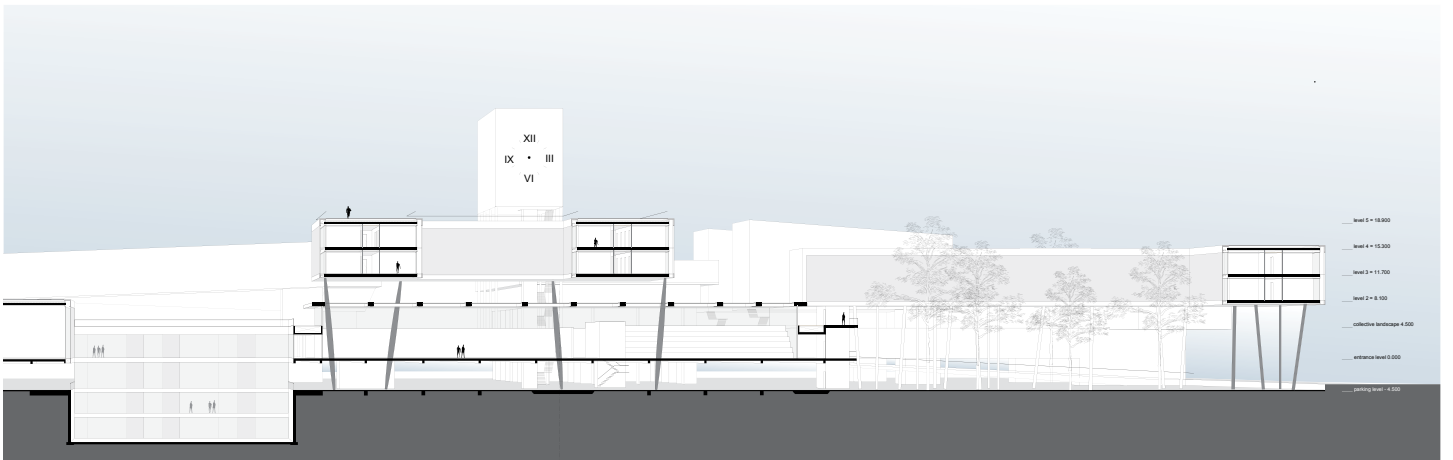
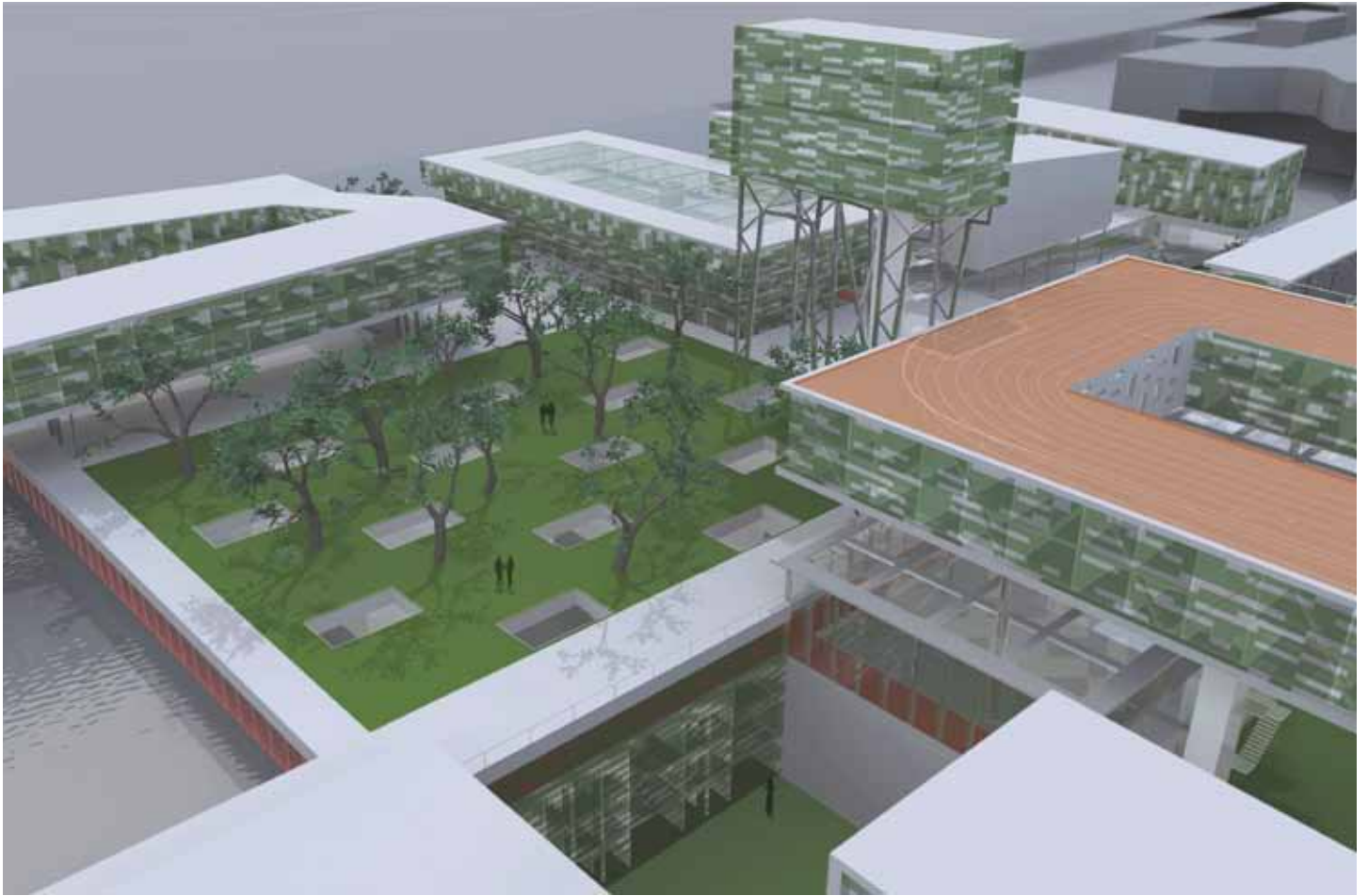
EUROPEAN PATENT OFFICE

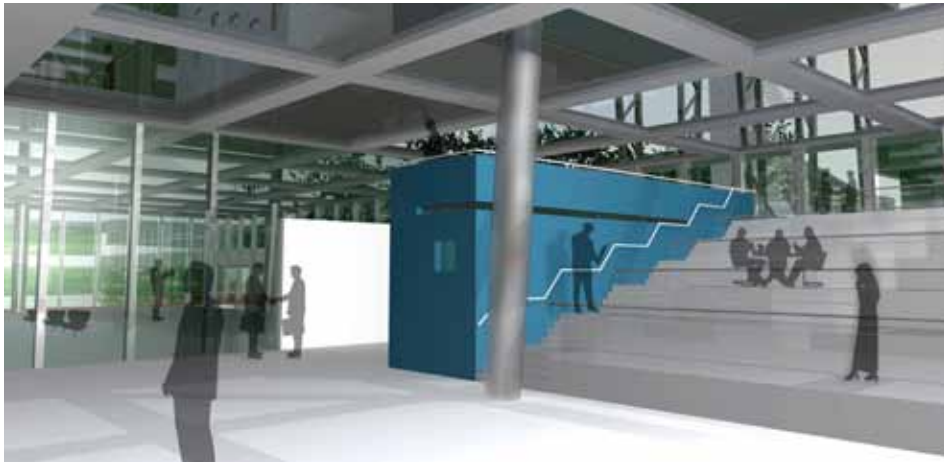
In his dialogue with Tullio Regge, Primo Levi talks about the beauty of the Periodic System: “...there is the echo of great discovery, the discovery that takes your breath away, the echo of the emotion (also aesthetic, also poetic) that Mendeleev must have experienced when he intuited that by ordering the elements then known in that particular way, chaos gave way to order, the instinct to the comprehensible... To discern or create a symmetry, “put something in its proper place”, is a mental adventure common to the poet and the scientist” (Dialogo, Primo Levi en Tullio Regge, Princeton University Press 1989)

The latter, in our opinion, is also true of architecture.





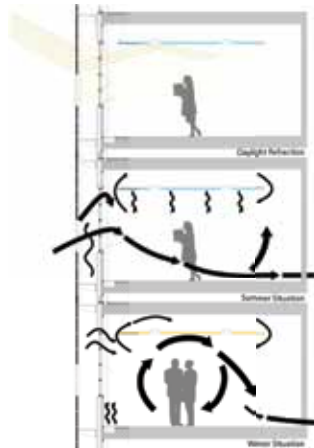
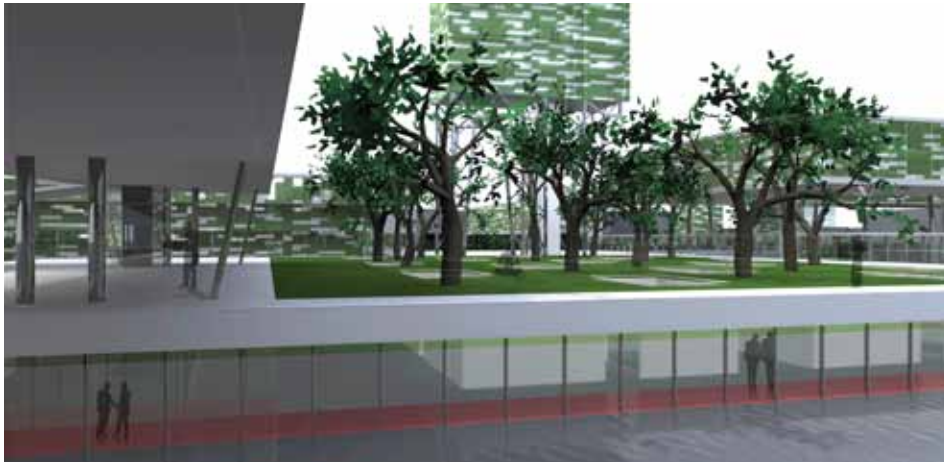




European Patent Office

In 1869, the 35-year-old chemist Dmitrii I. Mendeleev published his Periodic System of the elements, one of the clearest examples of scientific insight ever. This very structured model, which left open spaces for yet undiscovered elements, laid down the foundation for an enormous amount of productive research over the following decades. Inspired by the characteristics en clarity of the Periodic System, this design structures the programmatic contents of the new EPO building within a framework which strengthens the identity of each individual department while at the same time revealing its relationship to the whole. The various elements (office modules, accessory areas and central facilities) and the structural framework (a grid of illuminated corridors) work together to form a collective landscape: a microcosms of areas for working and relaxing. At this location, the fundamental beauty of science and the structural beauty of architecture come together, on a functional as well as on a conceptual level.

The large working community of the EPO is set up in a low-rise urban village context where social interaction and physical activity promote productivity and excellence at work. This extensive campus offers a large variety of healthy office environments, residential units and sporting facilities which are incorporated into the whole scheme. The low-rise scheme supports an efficient logistic infrastructure and facilitates a spectacular, wind and noise sheltered ecological green open space.



Competition organiser:

European Patent Office

Project in collaboration with:

DS Landscapsarchitecten, 3D Blueprint, DHV

Location:

Rijswijk

Programme:

Offices, parking, external space

Gross area:

71 100 m2

Status:

International competition finalist 2004

[www.abbinkdehaas.nl](http://www.abbinkdehaas.nl)

[info@abbinkdehaas.nl](mailto:info@abbinkdehaas.nl)

X