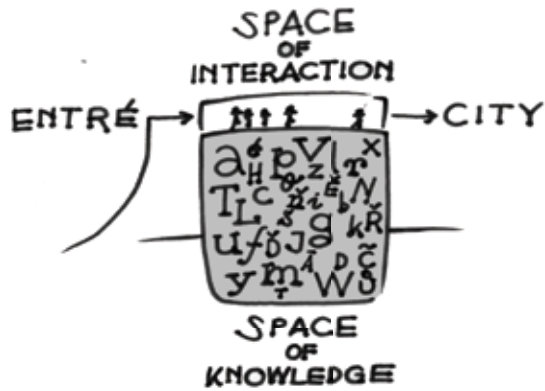
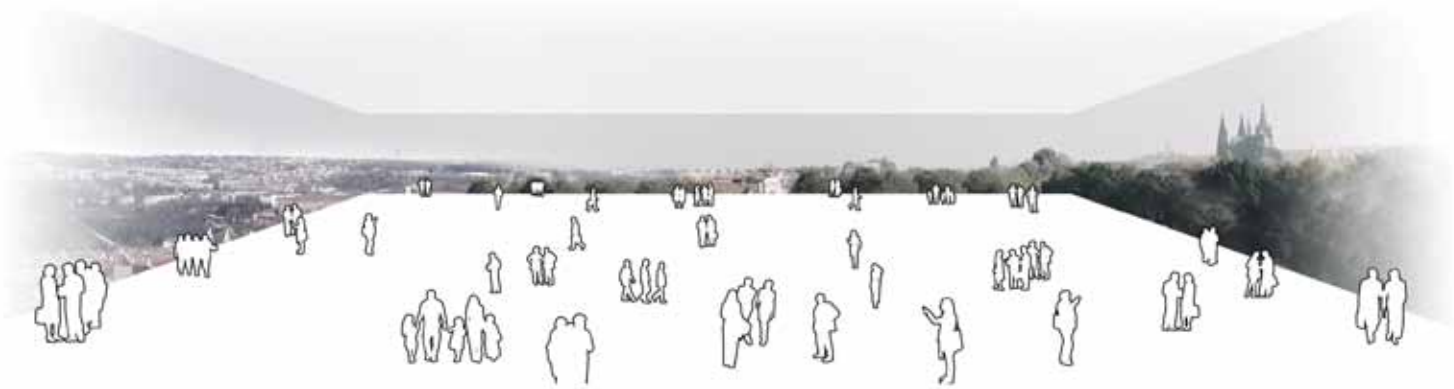


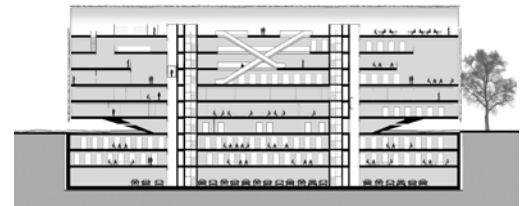
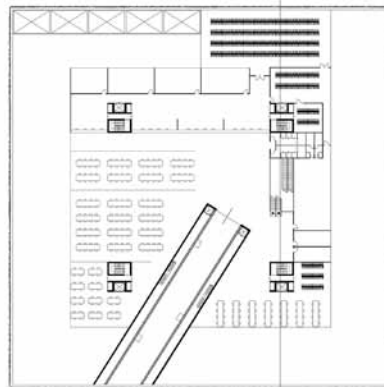
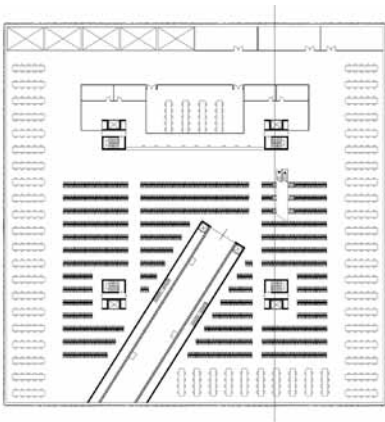


**ABBINK × DE HAAS**  
architectures

BUILDING THE WRITTEN



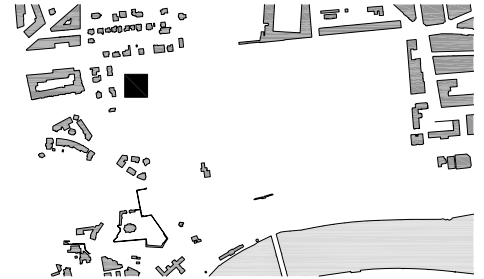






## Building the written

The Czech identity can best be visualised via the image presented by the city of Prague and its monuments. In line with this principle, the public heart of the library must be located on the top floor. The entrance to the building should actually be situated on this level. From this public area, visitors descend to the other parts of the library. Besides offering a spectacular and panoramic view of the entire city, a structural cut in the building also offers an internal view of the enormous book collection. The atrium cuts through five floors. The bottom floor is the reading area for the national archives and also offers a framed view in the direction of the Prague Castle.



### Client:

Prague Council

### Location:

Prague, Czech Republic

### Programme:

Library with educational facilities, offices, storage, catering and parking

### Gross area:

50 000 m<sup>2</sup>

### Status:

Competition 2006

X