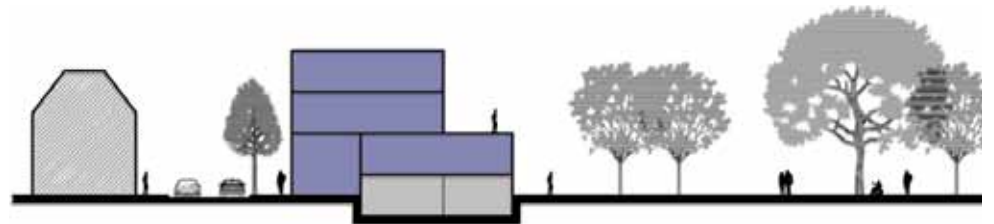
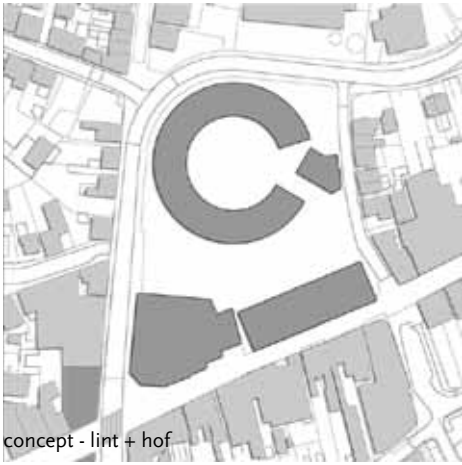
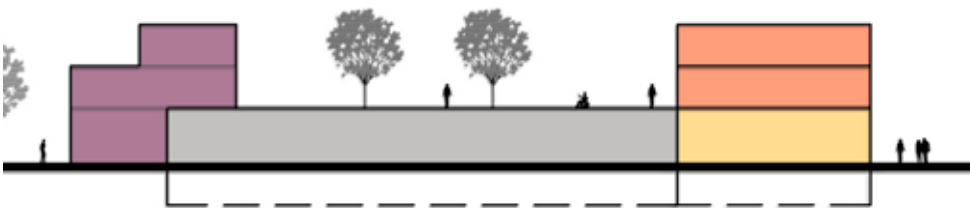




# WINTERSWIJK







groot Spekende



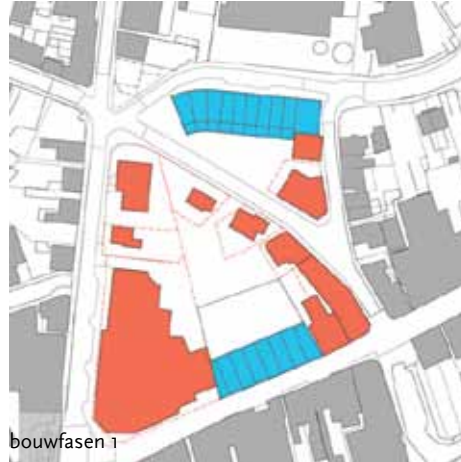
nieuw traject centrumring



ontwikkeling park rondom gemeentehuis



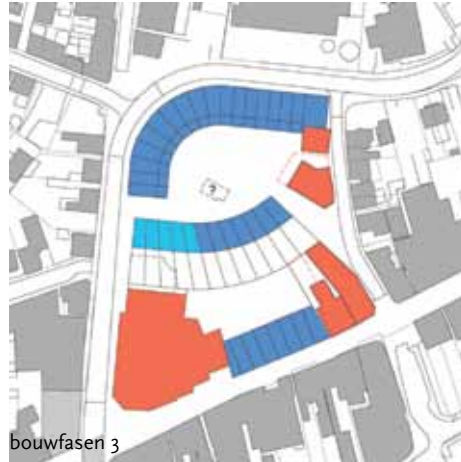
bestaande situatie



bouwfasen 1



bouwfasen 2



bouwfasen 3



optie: invulling tussen bestaande gebouwen



optie: superblock (350 p.p. ondergronds)

## Winterswijk

Block A separates the Spekende courtyard from the new central ring. A building envelope is being created here in which 17 residential units as well as commercial properties can be built on free lots. The residential units will be accessible from Schoolstraat as well as from the courtyard. Block B also adjoins the Spekende courtyard and, on the south side, is adjacent to the underground car park of the CWI building. A total of 11 single-family homes will be accessible via the Spekende courtyard as well as via the car park. All these homes have their own private garden on the roof of the car park. Block C has a shared entrance as well as commercial space along Misterstraat. The entrance provides access to the car park and the collective garden located on top of it. The garden provides access to 12 apartments.

Client:  
Rabo Vastgoed BV & Indestad  
Location:  
Winterswijk, Nederland  
Programme:  
urban design and landscape  
Surface area:  
12 250 m<sup>2</sup>  
Status:  
urban plan 2006

[www.abbinkdehaas.nl](http://www.abbinkdehaas.nl)  
[info@abbinkdehaas.nl](mailto:info@abbinkdehaas.nl)

X