



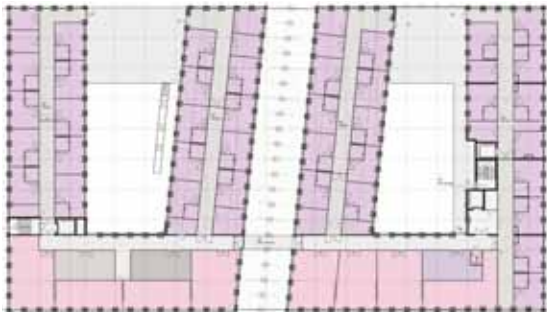
HET GOED



Ground floor



First floor



Second floor



Third to sixth floors

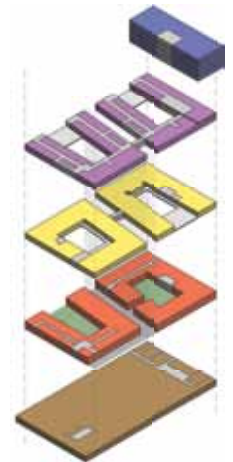
appartements

psycho geriatric centre

assisted care
residential units

health centre

parking







Het GOED

GOED (Dutch acronym for Health Under One Roof), located along the edge of the Zuiderpark (Southern Park), is part of a new centre accommodating various social facilities in Apeldoorn. The building program is very extensive and includes areas for dentists, psychotherapist, psycho-geriatric care, a gym, chemist's shop, child care, senior citizens' centre, residential assisted care units, and 36 apartments. The building is organised around U-shaped floor plans which are rotated somewhat per each floor so that openings are created towards the park and the green inner square.

The building's elegantly detailed brick and glass façade conceals structure and installations, allowing flexible internal layouts for the various services provided within the building. In addition regular structure and fenestration creates a rigid image of a brick plinth.

The apartment block forms an urban landmark, positioned on the edge of a park and corner of a main road intersection. It's façade is composed of silver coloured plates which contrast with the brick plinth on which it sits. Heavy and light, sturdy but inviting, open yet safe – that's what GOED is...



Client:

De Goede Woning

In cooperation with:

3D Blueprint

Location:

Apeldoorn

Programme:

Health centre

36 apartments

psycho geriatric centre, parking

Gross area:

16 500 m²

Status:

Completed in 2011

www.abbinkdehaas.nl

info@abbinkdehaas.nl

X