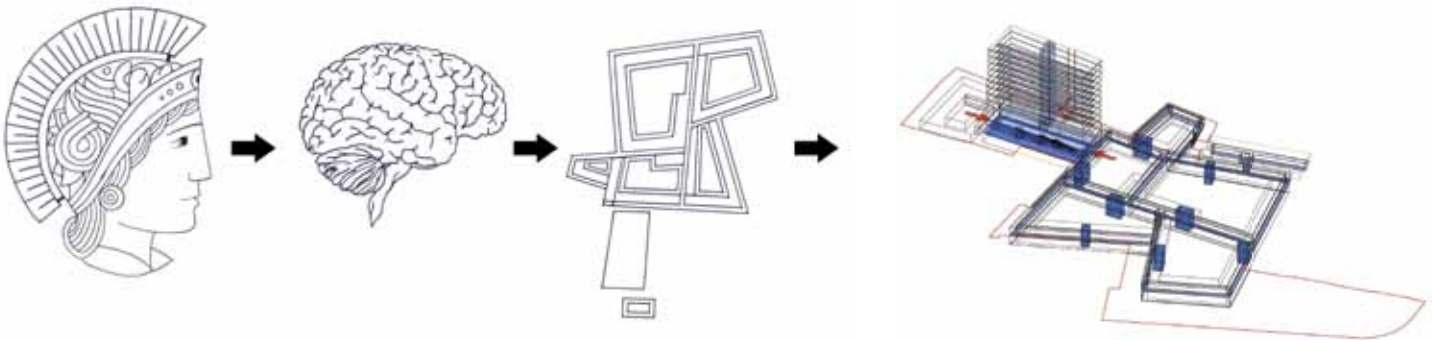
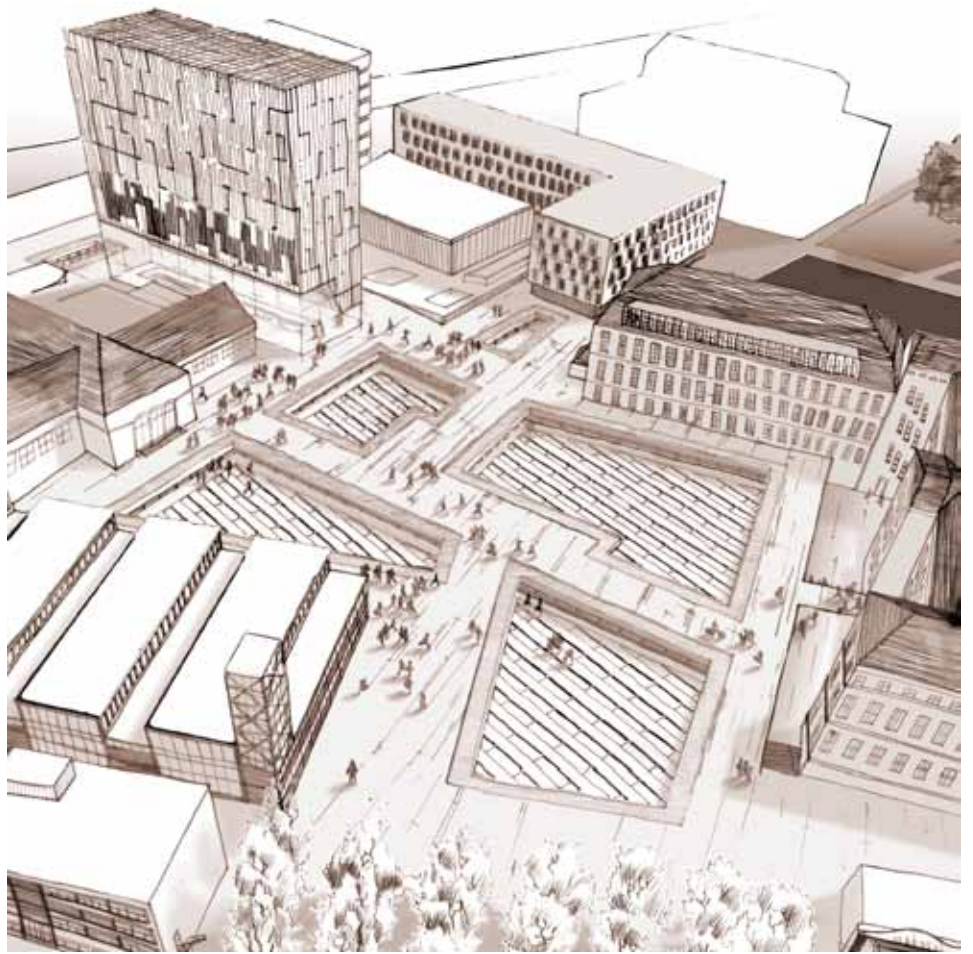
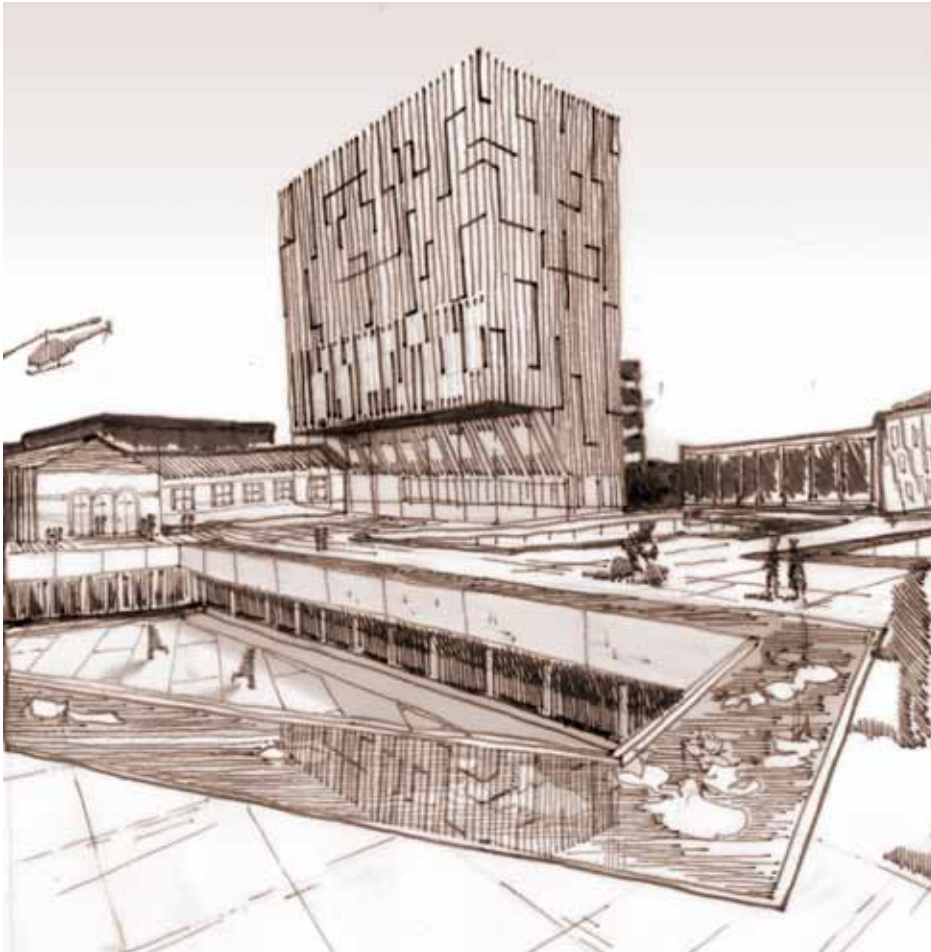


WISSENSLANDSCHAFT





The Secret as a Metaphor

“... I begin to sing of Pallas Athena, the glorious goddess, bright-eyed, inventive, unbending of heart, pure virgin, saviour of cities, courageous, Tritogeneia. Wise Zeus himself bare her from his awful head, arrayed in warlike arms of flashing gold, and awe seized all the gods as they gazed. But Athena sprang quickly from the immortal head and stood before Zeus who holds the aegis, shaking a sharp spear: great Olympus began to reel horribly at the might of the bright-eyed goddess, and earth round about cried fearfully...”

[Homer, *Homeric Hymns* 28.1 App. 830-820 B.C ed. & translation: Hugh G. Evelyn-White, Loeb Classics, Cambridge Mass., 1914]

Athena Goddess of wisdom is prominent in the logo of the University of Darmstadt. The origin of the wisdom and known form of the brain are major inspirations for this design. Five different courtyards form the spaces where the different sections of the library are organised. The spaces between the courtyards provide a pedestrian connection in the heart of the campus. A central entrance located under the book stores leads the visitor to the underground corridors and along the various courtyards.



Client:
 Darmstadt University
 Location:
 Darmstadt. Germany
 Programme:
 University Campus buildings
 Gross area:
 19 000 m2
 Status:
 Competition 2005

www.abinkdehaas.nl
info@abinkdehaas.nl

X