



28 x HOUSES / 1 x STREET





Manifesto

“Start with the interior and make an architectural statement about the housing of today” - that was the assignment given to five architects, designers and agencies. A remarkable proposition in an era when the emphasis of housing design is on the outside. The project is about creating amazing home interiors, which have flexibility, innovative designs and the facade which is a reflection of the interior. By compiling and refining the designs, the street has an individual identity with a cohesive street façade.

The architect as director and inspirer of the current living culture! - that is the motto of this project.

Abbink X De Haas architectures has designed two of the five types of housing: ‘Raja & Jan’ and the “Top Down House “.

Architects:

Angie Abbink & Elsbeth Falk, Micha de Haas

In cooperation with:

supervisor Cees Nagelkerke and colleagues Paulien Bremmer, Marjan van Herpen, Ira Koers, Pepijn Nolet

Client:

Ymere

Contractor:

Regiobouw Haarlemmermeer

Location:

Bernadottelaan, Haarlem

Programme:

12 of 28 town houses

Status:

completed april 2009

Total project value:

€ 3.900.000,-

Urban planning:

Fons Verheijen, Milembe Mateyo, Angie Abbink

Photography:

Michael van Oosten, Ira Koers, Abbink X De Haas

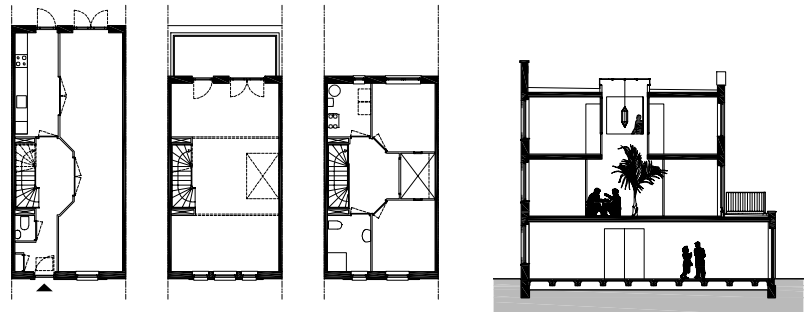
www.abbinkdehaas.nl

info@abbinkdehaas.nl

Raja & Jan

Much in the same way that our palate, our music and our clothing has been enriched and reinvented by various cultural influences, the Raja & Jan house is a result of cultural sampling such as combining the Turkish Sofa, the Moroccan Patio and the Dutch family terraced house. The outcome is specific and classic, has character and atmosphere, is intimate and flexible, creating spaces and configurations for all cultures to feel at home in. Each floor, and the entire house in fact, can be used in different ways without being generic or needing drastic changes, creating long-term flexibility in a distinctive setting. The façade is dictated by an intimate lifestyle and makes use of stylised safety railings which double up as ornamental shadow screens between inside and outside. A special brick is applied in pattern next to the collective brickwork and topped off with a typically Dutch ceramic wall tile. Each façade can be personalised by choosing a different configuration or adding a practical ornament such as the satellite-dish onion.

Schalkwijk is a post-war borough in the middle of much needed revitalisation. By introducing a new housing typology to the monotonous neighbourhood a greater demographic will be enticed to the area. Raja & Jan looks at working with the potential of current residents, providing new housing opportunities within the community and strengthening the social cohesion of the borough.



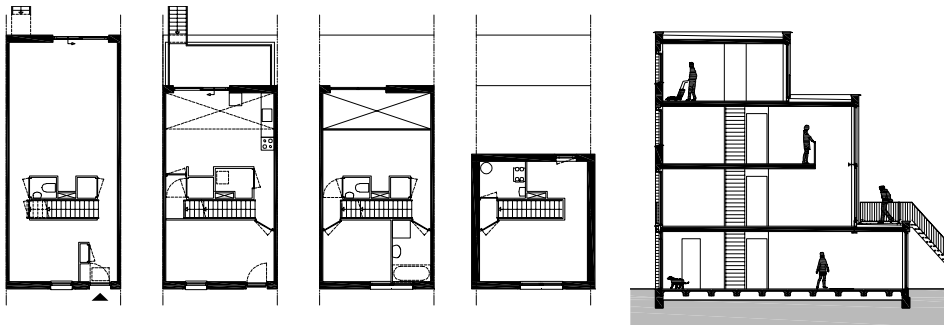


interieur door bewoners



Top Down House

Instead of designating a 4th floor as a possible expansion in the future, the chosen design makes use of the 4th floor from the start; this is to conform with the street profile and the urban plan, but also to allow more design possibilities and greater diversity on the inside. It is a strategy of contraction instead of expansion. Therefore ultimately it is inexpensive to change, and it is possible to maximise the potential of the property. The house is perfect for living / working combinations or as a three-generation house. Thus being sustainable over time.



To maintain the collective street profile, the façade of the Top Down house is deliberately simple and kept to the site boundary without protrusions. The only disparity to the facade is the tiles around the windows. Similar to the Delft blue tiles - a reference to the multicultural context of Meerwijk - each house has a series of different old images which include: street games, occupations, musical instruments etc.; an additional sign of individuality within this housing development project.

X