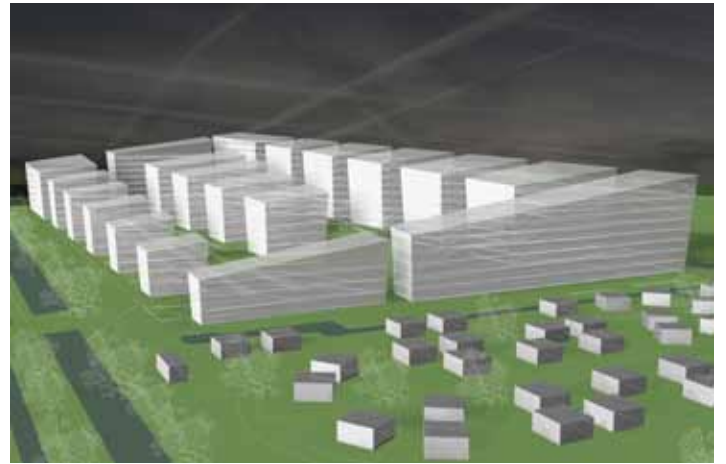
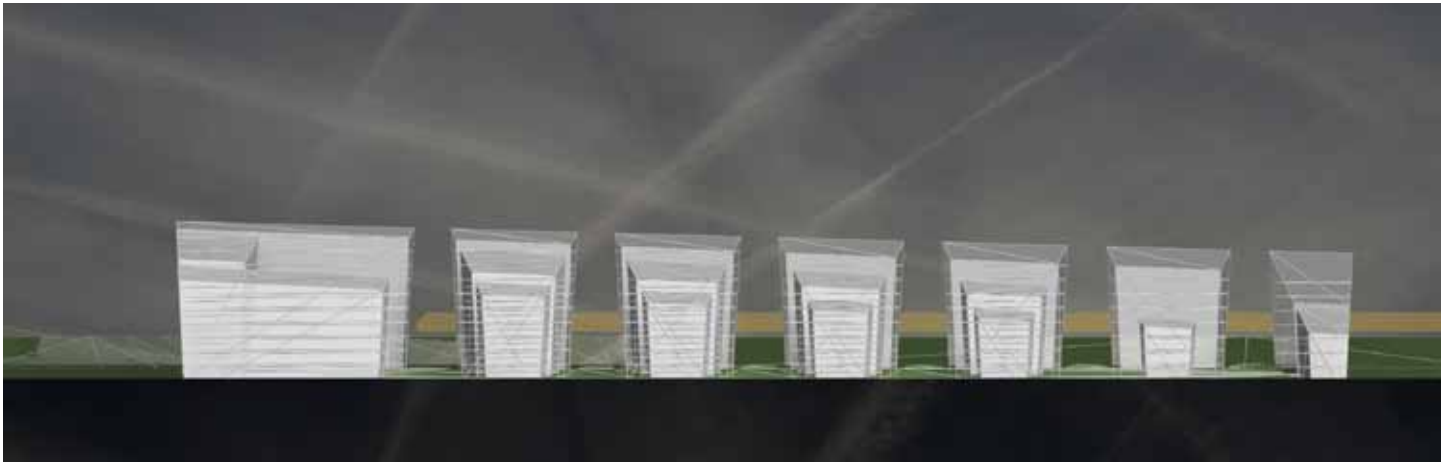




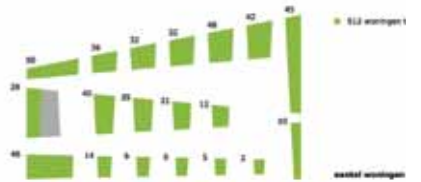
MIDDENMEER



parkieren ondergrondse



bebouwing buitenruimte



bebouwing woningen



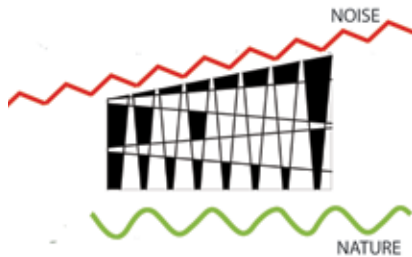
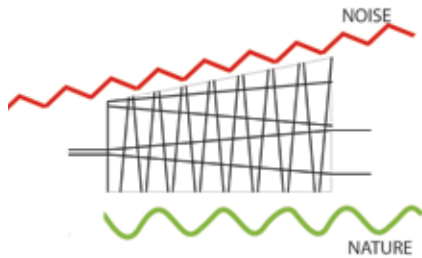
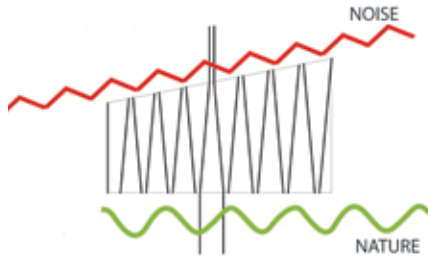
bebouwing woningen



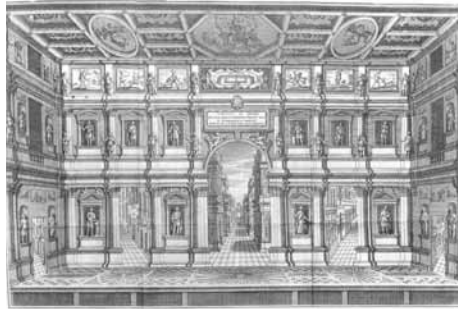
voorzieningen



voorzieningen



concept



MiddenMeer

The objective was to create a recognisable neighbourhood by means of using a clear spatial principle. The urban design for Middenmeer is inspired by Robert Smithson's Land Art and Palladio's Teatro Olimpico, in which depth of perception is enhanced using an exaggerated perspective.

The building blocks for this brand new district are extracted from a diagonally carved mass. The cuts near the railway minimal on the railway side and larger on the "open nature" side, allowing nature to penetrate the whole neighbourhood. Public spaces, routing into and through the neighbourhood and building mass are organised in a self-explanatory fashion within this simple yet effective system



Client:

DRO, city of Amsterdam

Location:

Amsterdam, Watergraafsmeer

Programme:

500 woningen en voorzieningen

Area:

73 000 m2

Status:

Study 2006



www.abbinckdehaas.nl
info@abbinckdehaas.nl

X