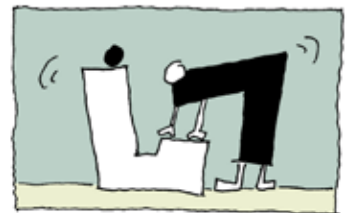
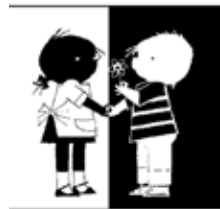
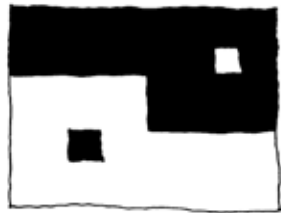
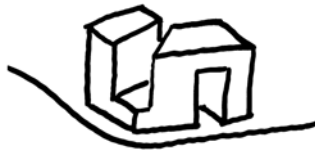




ABBINK X DE HAAS
architectures

JIP & JAN



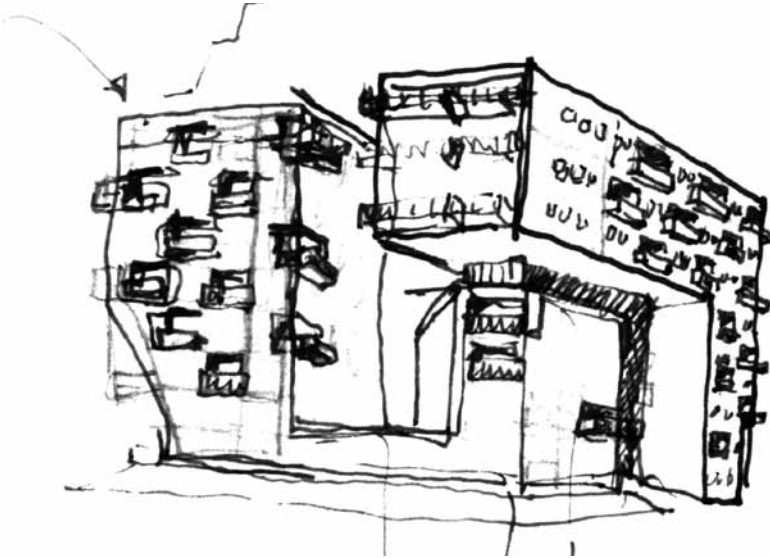




Jip & Jan

The housing in the garden city of IJsselmonde is dominated by one typology, 'the strip': linear and rarely stacked residential buildings. These are the icons of the 'garden city' which are rarely seen in a positive light. We have studied the hidden potentials of this type of building and composed a catalogue of different variations.

We began with the dividing of the building mass into three towers. Based on the typology of 'the strip', we then manipulated the towers, connecting and then separating them. The result is a dynamic spatial composition in which two masses balance and embrace each other.



Client:
Slokker Vastgoed, Huizen
Location:
IJsselmonde
Programme:
45 woningen met parkeren
Gross area:
5000 m²
Status:
Design
2003

www.abbinkdehaas.nl
info@abbinkdehaas.nl

X